

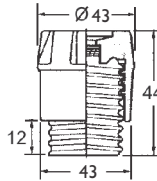
Bottle fuse holders are single pole made up of the following components;
 (a) Screw Cap, (b) Gauge Piece, (c) Fuse Base and (d) Protection Collar.
 The bottle fuse cap has a window feature which shows the user if a bottle fuse is intact or blown.



Assembled Fuse Holder



Screw Cap



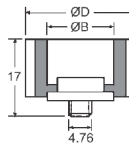
Screw Cap

Part Number	Fuse Size
B33-CAP	E33 / B33 / DIII

Gauge Piece

Part Number	Fuse Size	Fuse Rating	Colour Code	Dimensions in MM	
				B	D
E27G2*	E27 / B27 / DII	2A	Pink	6.5	24
E27G4*	E27 / B27 / DII	4A	Brown	6.5	24
E27G6	E27 / B27 / DII	6A	Green	6.5	24
E27G10	E27 / B27 / DII	10A	Red	8.5	24
E27G16	E27 / B27 / DII	16A	Grey	10.5	24
E27G20	E27 / B27 / DII	20A	Blue	12.5	24
E27G25	E27 / B27 / DII	25A	Yellow	14.5	24
E33G35	E33 / B33 / DIII	35A	Black	16.5	30
E33G50	E33 / B33 / DIII	50A	White	18.5	30
E33G63	E33 / B33 / DIII	63A	Copper	20.5	30

Gauge Piece



E27G6



E27G20

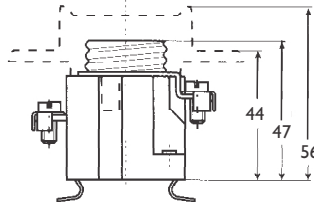
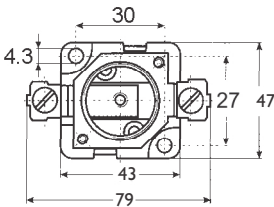


* Indent items only

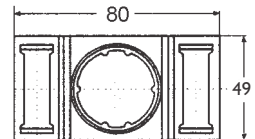
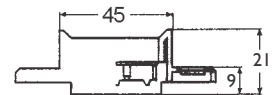
Single Pole Fuse Base & Collar

Part Number	Fuse Size	Electrical Rating	Base Mounting
B33-BASE-S	E33 / B33 / DIII	63A @ 500VAC	Screw

Fuse Base Din Rail Mount



Collar - Protection Cover



Notes: *Collar is included with the base.

Approvals: LLOYD'S Register of Shipping

RELATED PRODUCTS:

Bottle Fuses, E27 & E33 Size, Type gR (p63)
 Bottle Fuses, E27 & E33 Size, Type gG & F (p81)

