

AC / BC SERIES

(TB / K08)

Bussmann Part Number	Redspot (660V) Part Number	Ampere Rating	Voltage (VAC)	Voltage (VDC)	Type
AC002	TB2	2A	550V	250V	gG
AC004	TB4	4A	550V	250V	gG
AC006	TB6	6A	550V	250V	gG
AC010	TB10	10A	550V	250V	gG
AC016	TB16	16A	550V	250V	gG
AC020	TB20	20A	550V	250V	gG
AC025	TB25	25A	550V	250V	gG
AC032	TB32	32A	550V	250V	gG
BC040	TB40	40A	550V	250V	gG
BC050	TB50	50A	550V	250V	gG
BC063	TB63	63A	550V	250V	gG
BC63M80	-	63A (80M)	550V	-	gM
BC63M100	-	63A (100M)	550V	-	gM

AC / BC Specification

I.R.: 80kA at rated VAC/VDC

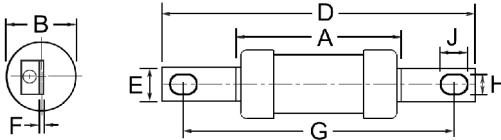
Voltage: VAC (As listed)  
VDC (As listed)

Characteristic: See Type Listing

Pack Size (box): 10

Approvals: BS88, IEC269-1

NOTE: Some dimensions may vary between brands. Please contact us before ordering.



Dimensions in MM

Fuse	Ampere Rating	A	B	D	E	F	G	H	J
AC	2A - 32A	55.5	21	113.5	12.7	1.6	97.5	7	13.5
BC	40A - 63M100	55.5	21	113.5	12.7	1.6	97.5	7	13.5

INDUSTRIAL

Red Spot Fuse Holders

The original GEC Red Spot fuse holder is now Eaton Bussmann.

- Designed and CSA Certified for use up to 400 amps and 690Vac/dc.
- Multiple termination options; front connected, back connected etc.
- Fully shrouded terminals provide finger-safe IP20 protection.
- Enhanced safety; flame-retardant & non-hygroscopic components.
- Wide range of fuses to suit.



For further information please see our fuse holder section page 129.