

EV FERRULE & BOLTED TAG FUSE BLOCKS 10.3MM DIA.



Part Number	Description
BH114-1C	Single Pole Ferrule Cartridge Fuse Block 30A
BH114-1M	Single Pole Flush Bolted Tag Fuse Block 50A
BH114-CN	Clear Snap On Fuse Cover (Ferrule or Bolted)

Rating Clip Mount: 30A **Voltage:** 1100VDC
Rating Bolt Mount: 50A **Voltage:** 1100VDC
Suit Fuses: 10.3 x 38.1mm (Cartridge or Bolted Tag).
Wire Size: 14-10 AWG (1.6 - 8.4mm²)
Material: Thermoplastic (Base & Cover).
Flammability: UL94V0 (Base)
Operating Temperature: -40°C to +125°C
Terminals: Tin plated, copper alloy.
Mounting: Screws, bolts or DIN rail mounting.
Feature: Slide lock design.
Pack Size (box): 1, 10, 100
Notes: Fuse not included.
Approvals: TUV



RELATED PRODUCTS:



EV Cartridge Fuse
(see p.32-34)



EV Flush Bolted Fuse
(see p.32-34)



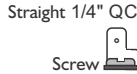
Clear Cover



Fuse Block Assembled



Gangable Slide Lock Feature



Straight 1/4" QC

Screw

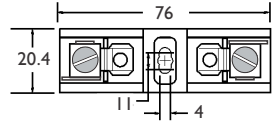


90° 1/4" QC

Screw



33



Dimensions in MM

Terminals fitted on each end.

FUSE HOLDERS

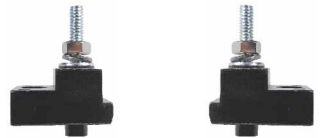
EV / EVSE BOLTED FUSE BLOCKS MODULAR



NEW

The C5268 series is a simple design modular fuse block. With this design, the fuse terminal and cable (with termination) are mounted on the same stud, minimizing labor needed for installation.

Part Number	Ampere Rating	Stud Diameter and Thread Type	"A" Stud Height
C5268-4	100A	1/4"-20 UNC (6.35mm)	1.00" (25.4mm)
C5268-5	100A	1/4"-20 UNC (6.35mm)	1.75" (44.45mm)
C5268-3	200A	5/16"-18 UNC (7.93mm)	0.75" (19.05mm)
C5268-1	200A	5/16"-18 UNC (7.93mm)	1.00" (25.4mm)
C5268-2	200A	5/16"-18 UNC (7.93mm)	1.75" (44.45mm)



Pack Size (box): 1 block (order 2 blocks per fuse).
Ambient Temp: 150 °C
Base: Plaslok S5440 phenolic, UL 94V-0 or 94V-1.
Studs: Steel, Zinc Plated
Accessories: Includes nut & spring washer.
Notes: Fuse not included.

Fuse blocks with fuse installed.



RELATED PRODUCTS:



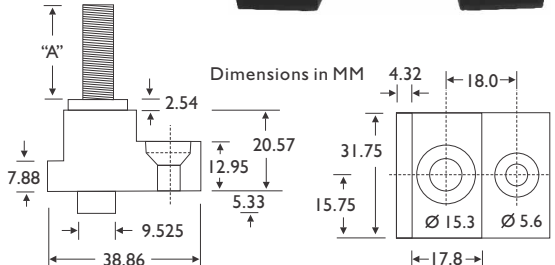
Class T Fuse
160V
(see p.31)



EV Fuse
500V - 800V
(see p.32-33)



EV Fuse
1000V
(see p.34)



Dimensions in MM