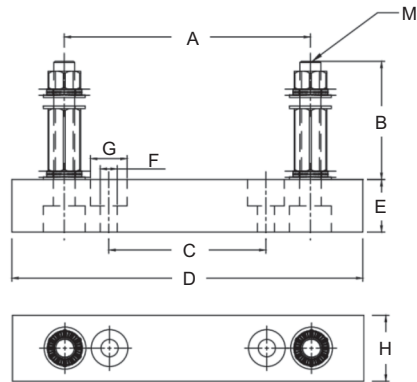
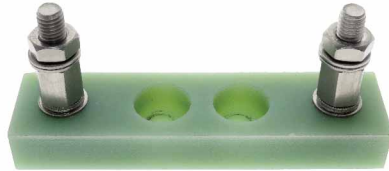


# EV / EVSE BOLTED FUSE BLOCKS FIXED



The BFR series fuse bases are suitable for use in automotive vehicles and automotive supply equipment. The bolt mount assembly system uses a wedge lock system to withstand extreme vibration or dynamic loads. The Adler BFR series EV fuse block uses special materials for use with high fault currents and temperatures specifically for automotive fuses applications.

- Rated Voltage:** 1000VAC / 1000VDC
- Rated Current:** Adler EV fuses (all current ratings) can be used with their suitable fuse blocks.
- Operating Temperature:** -50°C to +180°C
- Max Voltage:** 13-18 kV
- Insulation Board Material:** FR4
- UL94 Flame Retardant Grade:** 94HB
- Insulation Resistance:** 50,000 M ohm
- Studs:** Stainless steel.
- Hardware:** Two-piece interlocking wedge lock washers.
- Hardware Option:** Detend edged washers add suffix -S.
- Pack Size:** 1, 20, 100
- Notes:** Fuse not included.



FUSE HOLDERS

Fuse Block Part Number	Suggested Stud Torque	EV Fuse Range Adler Series	Dimensions in MM								
			A	B	C	D	E	F	G	H	M
BFR063-38-M6	9 ± 1 Nm	AE5..620	63	38	31	84	15	5.5	9	25	M6
BFR071-46-M8	12 ± 1 Nm	AE5..625, AE5..631	71	46	25	96	15	8.5	14	30	M8
BFR094-45-M8	12 ± 1 Nm	AE7..i25	94	45	60	134	20	6.5	14	25	M8
BFR099-70-M10	16 ± 1 Nm	AE7..i38, AE7..i51	99	70	60	146	20	6.5	14	42	M10
BFR106-46-M8	12 ± 1 Nm	AEX..731	106	46	60	146	20	6.5	14	35	M8
BFR116-72-M10	16 ± 1 Nm	AEX..738, AEX..751	116	72	60	146	20	6.5	14	42	M10

## RELATED PRODUCTS:



**AE5 500V Fuses**  
(see p.32)



**AE7 800V Fuses**  
(see p.33)



**AEX 1000V Fuses**  
(see p.34)



Email: [info@prolecproducts.com.au](mailto:info@prolecproducts.com.au)  
Web: [www.prolecproducts.com.au](http://www.prolecproducts.com.au)