

The Zcase Single Mega Starter Fuse is a minimal footprint bolt down fuse with a wide rating range up to 600A in the same packaging size. The Time Current characteristic is similar to the well known Mega fuse and fuse ratings up to 250A can be used for full wire protection. Higher fuse ratings mostly used for typically Starter Fuse application as a protector fuse. The fuse can be used directly on a battery post or busbar connection. Littelfuse is offering a complete solution for the necessary stud and different busbar connections including some battery clamps.

Features:

- Extensive amperage range 40A to 600A.
- Voltage rating 32VDC max.
- Accept mounting terminal size M8 max.
- Several mounting options, stud and post.
- Multi position busbar fed fuse blocks available.

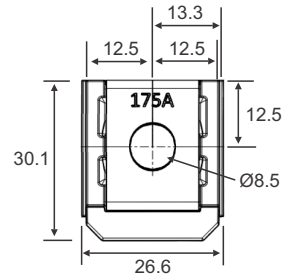


ZCASE Shunt



ZCASE Fuse

M8 Part Number	Ampere Rating	Wire Size	
3298040	40A	4mm ²	NEW
3298060	60A	6mm ²	NEW
3298080	80A	10mm ²	NEW
3298100	100A	16mm ²	NEW
3298125	125A	16mm ²	
3298150	150A	25mm ²	
3298175	175A	25mm ²	
3298200	200A	35mm ²	
3298225	225A	35mm ²	
3298250	250A	50mm ²	
3298300	300A	35mm ²	
3298350	350A	35mm ²	
3298400	400A	50mm ²	
3298500	500A	50mm ²	
3298600	600A	50mm ²	
3298900	Shunt	50mm ²	NEW



Voltage: 32VDC **I.R.:** 2kA at 32VDC

Characteristic: Slow Acting

Cover / Base: PPA (33% GF)

Operating Temp: -40°C to 125 °C.

Insulating Tube: Ceramic

Terminal: Copper Tin Plated

Mounting: M6 or M8 stud (40A - 250A), M8 stud (300A - 600A).

Pack Size: 1, 5, 10, 100, 480

Holders: Stud Terminal Mount 1 Way and 2 Stacked.

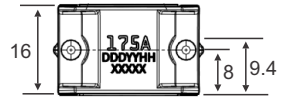
Top Post Terminal Mount 2 and 3 Way.

Fuse Block 5 and 7 Way.

Zcase Options with M10 Mounting Terminal Type:

- Battery Fuse Zcase M10: 32V (80A to 600A), #3298xxx.ZXM10.
- Battery Shunt Zcase M10: 32V, #3298900.ZXM10.
- Materials Handling Fuse Zcase M10: 80V (70A to 600A), #3998xxx.ZXM10.
- Materials Handling Shunt Zcase M10: 80V, #3998900.ZXM10.
- Sealed Battery Fuse Zcase M10: 600A 80VDC. Explosion Proof version is also available with Sealed Fuse Mount.

Please contact sales for further information on all of the above variants.



Dimensions in MM

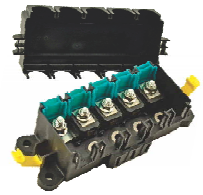
RELATED PRODUCTS:



M8 Terminal Fuse Bar & Cover
Stud Mount (p. 107)



Battery Mount Fuse Bar & Cover
Post Mount (p. 107 & 109)



Multi-Pole Fuse Blocks
(see p. 108 - 109)