

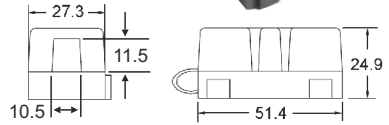
MIDI FUSE BLOCKS GANGABLE 58V



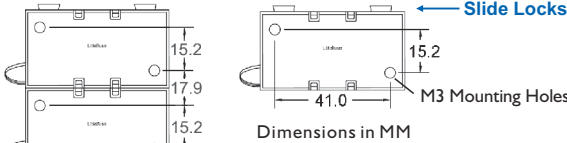
Part Number	Description
04980900	Midi Fuse Block with M3 In-Board Mounting
04980903	Midi Fuse Block with M6 Mounting Tabs NEW

Voltage: 58VDC
Rating Continuous: 150A **Rating Max:** 200A
Body: Black glass filled thermoplastic.
Cover: Included. Black glass filled thermoplastic.
Hardware: Includes hex nuts & lock washers.
Studs: M5 threaded studs.
Features: Gangable
Pack Size: 1, 10, 100
Notes: The holders feature a stackable side design to allow multiple holders to be joined together. Fuse is not included.
Approvals: RoHS

04980900

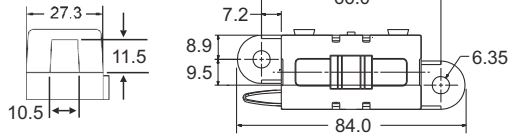


Gang Mount Setup



Dimensions in MM

04980903



RELATED PRODUCTS:



32V Midi Fuse
(see p.24)



58V Midi Fuse
(see p.24)

FUSE HOLDERS

MIDI FUSE BLOCK GANGABLE 65V

The BHR series fuse holder is specially designed for use with DC fuse in automotive equipment and road vehicles. It works with both 32V and 58V Midi fuses. The holder is built with special automotive grade materials to withstand high fault currents and temperatures.

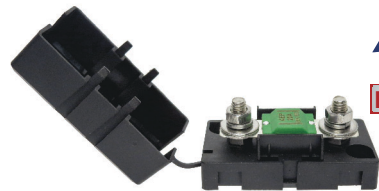
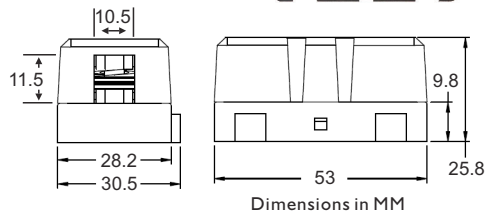
Part Number
BHR030-15-M5

Voltage: 65VDC
Rating: 125A
Body: Black PA + GF VO
Cover: Black PA + GF VO
Operating Temperature: -40 to +125°C
Hardware: Includes hex nuts & lock washers.
Studs: M5 threaded stainless steel.
Features: Gangable. Cover with window feature.
Pack Size: 1, 10, 100
Notes: The holders feature a stackable side design to allow multiple holders to be joined together. Fuse is not included.
Approvals: RoHS

Fuse window



Side locks



RELATED PRODUCTS:



32V Midi Fuse
(see p.24)



58V Midi Fuse
(see p.24)