

MIDI MULTI-POLE POLE COMBINATION FUSE BLOCK 58V



NEW

The MIDI-Flex fuse holder is used with the MIDI style bolt-down fuse, which is available up to 200 A. This holder offers a flexible cover, which allows cable entry from virtually any direction, large wire size, and ring terminal stack up. Slots on the base allow holder to be mounted with tie wraps. Dovetail features allow you to interlock multiple MIDI-Flex fuse holders together for a high power distribution block. Bus bars are available for multiple holder applications.

Features

- Flexible cover allows for cable entry from virtually any direction allowing for easier installation.
- Dovetail features allow you to interlock multiple Flex holders together to create a high power distribution block. Combine with the MEGA-Flex fuse holder for a high and low amperage solution.
- Slots are moulded into the base that allow the holder to be securely mounted with tie-wraps.
- Zinc plated steel hardware and tin-plated 100% pure copper optimize long-term corrosion protection.

Part Number	Description
04981038	Fuse Block with M5 Studs & Cover
882-267-002	Bus Bar (2 holes - spans 2 blocks)
882-267-003	Bus Bar (3 holes - spans 3 blocks)
882-267-004	Bus Bar (4 holes - spans 4 blocks)
882-267-005	Bus Bar (5 holes - spans 5 blocks)

Voltage: 58VDC

Rating: 200A

Accessories: Includes cover, hex nuts & split washers.

Studs: M5 threaded zinc plated steel studs.

Flammability: UL94 V-0

Wire Size: 8mm² to 35mm²

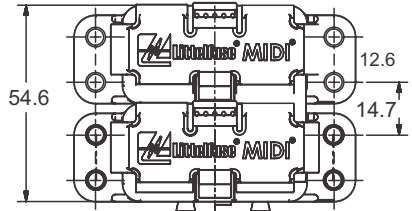
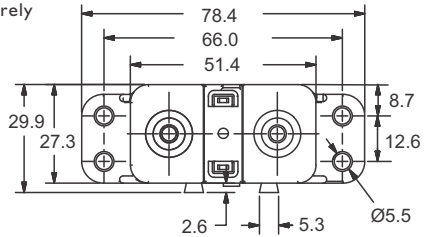
Operating Temperature: -40°C to +125°C

Pack Size (bag): 1, 10, 100, 500

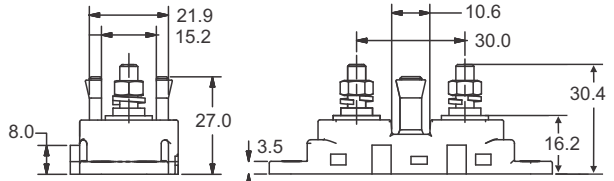
Notes: The holders feature a stackable side design to allow multiple holders to be joined together. Fuses are not included. The busbar needs to be installed first, followed by the Midi fuse, the split washer and finally the hex nut.



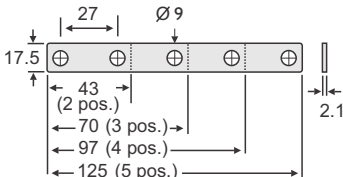
Midi-Flex Fuse Block



Bus Bars Accessories



Dimensions in MM



RELATED PRODUCTS:



32V Midi Fuse
(see p.24)



58V Midi Fuse
(see p.24)



**Midi-Flex & Mega-Flex
fuse blocks combined.**



Gang Mount Setup