

500VAC gG		
Part Number	Ampere Rating	Body Size
00C-NB002	2A	000 / 00C
00C-NB004	4A	000 / 00C
00C-NB006	6A	000 / 00C
00C-NB010	10A	000 / 00C
00C-NB016	16A	000 / 00C
00C-NB020	20A	000 / 00C
00C-NB025	25A	000 / 00C
00C-NB032	32A	000 / 00C
00C-NB035	35A	000 / 00C
00C-NB040	40A	000 / 00C
00C-NB050	50A	000 / 00C
00C-NB063	63A	000 / 00C
00C-NB080	80A	000 / 00C
00C-NB100	100A	000 / 00C
00C-NB125	125A	000 / 00C
00C-NB160*	160A*	000 / 00C
00-NB125	125A	00
00-NB160	160A	00



690VAC gG		
Part Number	Ampere Rating	Body Size
00C-GG002	2A	000 / 00C
00C-GG004	4A	000 / 00C
00C-GG006	6A	000 / 00C
00C-GG010	10A	000 / 00C
00C-GG016	16A	000 / 00C
00C-GG020	20A	000 / 00C
00C-GG025	25A	000 / 00C
00C-GG032	32A	000 / 00C
00C-GG035	35A	000 / 00C
00C-GG040	40A	000 / 00C
00C-GG050	50A	000 / 00C
00C-GG063	63A	000 / 00C
00-GG063	63A	00
00-GG080	80A	00
00-GG100	100A	00
00-GG125	125A	00

500VAC aM		
Part Number	Ampere Rating	Body Size
00C-SB002	2A	000 / 00C
00C-SB004	4A	000 / 00C
00C-SB006	6A	000 / 00C
00C-SB010	10A	000 / 00C
00C-SB016	16A	000 / 00C
00C-SB020	20A	000 / 00C
00C-SB025	25A	000 / 00C
00C-SB032	32A	000 / 00C
00C-SB035	35A	000 / 00C
00C-SB040	40A	000 / 00C
00C-SB050	50A	000 / 00C
00C-SB063	63A	000 / 00C
00C-SB080	80A	000 / 00C
00C-SB100	100A	000 / 00C



690VAC aM		
Part Number	Ampere Rating	Body Size
00C-AM002	2A	000 / 00C
00C-AM004	4A	000 / 00C
00C-AM006	6A	000 / 00C
00C-AM010	10A	000 / 00C
00C-AM016	16A	000 / 00C
00C-AM020	20A	000 / 00C
00C-AM025	25A	000 / 00C
00C-AM032	32A	000 / 00C
00C-AM035	35A	000 / 00C
00C-AM040	40A	000 / 00C
00C-AM050	50A	000 / 00C
00C-AM063	63A	000 / 00C
00-AM080	80A	00
00-AM100	100A	00
00-AM125	125A	00
00-AM160	160A	00

INDUSTRIAL

**I.R. 500V:** 120kA at 500VAC (Type gG/gL/aM)  
**I.R. 690V:** 100kA at 690VAC (Type gG/gL/aM)  
**Voltage:** VAC as rated. VDC call for confirmation.  
 \*Special range 400V only.

**Pack Size (box):** 3

**Holders:** Bases (p.138), Disconnect Switches (p.142-143)

**Accessories:** NH-Extractor (p.150)

**Approvals:** IEC60269, DIN 43620, VDE 0636

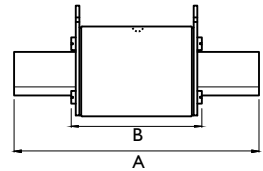
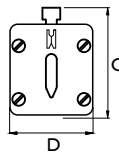
**Notes:** gL (general application-normal acting).  
 aM (motor start-delayed action).

**Features:** 'Flag' indicator located on top plate of fuse is standard.

New dual indicator versions also include center body 'visual' indicator.

**Additional NH Fuse Ranges:** Isolated gripping lugs.

Mining & marine versions also available.



Dimensions in MM

Size	A	B	C	D
00C	79	53	52	21
00	79	53	56	28

**RELATED PRODUCTS:**



**Fuse Bases**  
(see p.138)



**NH Blade Fuse Disconnectors**  
(see p.142-143)

