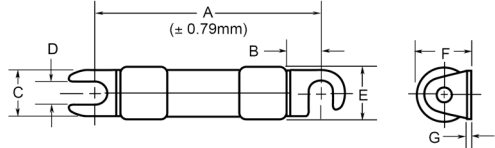


# LIFT TRUCK FUSE - NORTH AMERICAN STD.

Bussmann  
Slow Acting

**Applications:** Suitable for forklift trucks, battery hand trucks, motorized work platforms, battery systems etc.

Part Number	Ampere Rating
ACK010	10A
ACK015	15A
ACK020	20A
ACK025	25A
ACK030	30A
ACK035	35A
ACK040	40A
ACK050	50A
ACK060	60A
ACK070	70A
ACK075	75A
ACK080	80A
ACK100	100A
ACK120	120A
ACK140	140A
ACK150	150A
ACK160	160A
ACK175	175A
ACK200	200A
ACK225	225A
ACK250	250A
ACK300	300A
ACK400	400A



Dimensions in MM

Ratings	A	B	C	D	E	F	G
10A to 30A	63.5	9.5	12.7	6.4	14.2	14.9	0.8
35A to 60A	76.2	11.9	17.4	8.7	20.6	21.8	1.3
70A to 100A	88.9	13.9	19.0	7.9	27.0	28.6	1.3
120A to 200A	95.3	19.0	19.0	9.5	27.0	29.2	1.3
225A to 400A	95.3	15.5	19.0	7.9	1.1	28.6	1.3

**I.R.:** 10kA at rated voltage

**Voltage:** 130VDC (10A to 100A),  
72VDC (120A to 200A),  
48VDC (225A to 300A)

**Pack Size:** 10

**Holders:** Contact sales.

**Approvals:**

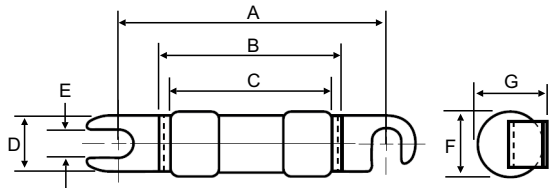
Time Characteristic % of Amp Rating	Approximate Opening Time
200%	100 sec
300%	35 sec
500%	13 sec

# LIFT TRUCK FUSE - NORTH AMERICAN STD.

Bussmann  
Non-Time Delay

**Applications:** Suitable for forklift trucks, battery hand trucks, motorized work platforms, battery systems etc.

Part Number	Ampere Rating
ALS100	100A
ALS175	175A
ALS200	200A
ALS225	225A
ALS250	250A
ALS300	300A
ALS350	350A
ALS400	400A
ALS450	450A
ALS500	500A
ALS550	550A
ALS600	600A



Dimensions in MM

Ratings	A	B	C	D	E	F	G
100A to 175A	88.9	-	61.1	19.1	7.92	26.85	28.6
200A to 500A	95.3	68.6	57.2	19.1	9.53	26.85	28.6
550A to 600A	107.9	60.5	-	31.75	13.5	40.4	46.1

**I.R.:** TBA

**Voltage:** 125 VAC / 125VDC

**Pack Size:** 10

**Holders:** Contact sales.

**Approvals:**